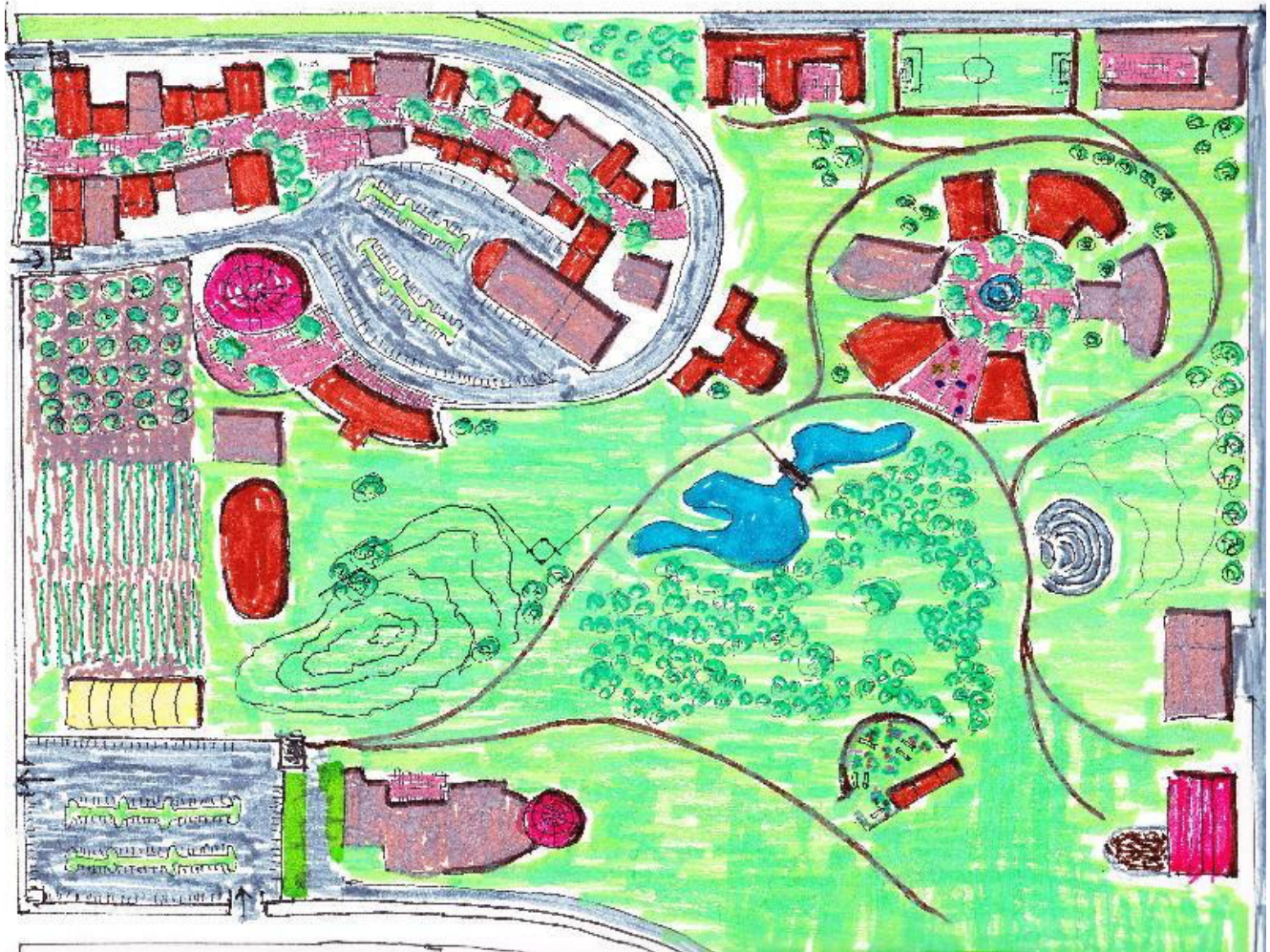


Learning Park: Concept Drawing With Key

Overall: 25 to 30 acres with public transportation access in a diverse community.

Upper Left: "Main Street" with up to 30 small businesses that double as learning centers for the Learning Park, with learning labs in their back rooms, (for example, a restaurant, architect, compounding drug store, music store, laundromat with kinder-space, furniture maker, child day care, senior day care, art gallery, clothier, organic foods grocery, hardware, book and media store, bistro, counseling center, tax and accounting service, coffee shop meeting space, second hand store, flea market, electronics sales and repair, media and programming development lab, news journalism center, building arts and small home prefab, film/theater studio, jeweler, health clinic, veterinarian, performing arts center, etc.);



Center Left: community organic garden, orchard, greenhouse, food processing building, farmers market, round chapter house meeting and governance center;

Lower Left: parking lot, public STEAM center and museum;

Lower Right: pasture, meditation garden, barn and barnyard, maintenance and machine shop, hillside Greek theater;

Upper Right: learning centers circle [buildings with flexible interiors, specialized at times for different purposes: sciences, human arts, literacy and languages, historical research, healing arts, social inquiries, engineering, etc.], cafeteria, resident buildings and games field;

Center: nature experience area, pond, woods, hill and fields.